



# AGE-FRIENDLY GREATER PITTSBURGH 2021 SURVEY RESULTS

## AGING IN COMMUNITY



One in 5 respondents had lived in their community for 45+ years



Had someone to help at any time of the day or night

**Respondents 65+ who rated their community Excellent/Very Good as a place for people to live as they age:**

White/  
Caucasian  
**67%**

Black/  
African American  
**39%**

### Top 3 Community Features

Well-maintained parks



Accessible and convenient public transportation

Free access to computers and internet in public places



Job training opportunities for older adults



  
A range of flexible jobs for older adults

Well maintained, safe low-income housing



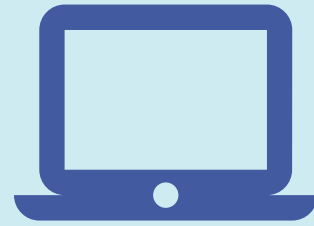
### Bottom 3 Community Features

# WORK & TECH

Of those presently in the workforce...

**64%**

...were **Extremely Likely/Very Likely** to continue to work as long as possible.



**Respondents 65+ who rated their technology skills as Excellent/Very Good:**



White/  
Caucasian



Black/  
African American

**Online participation\* during pandemic**

\*respondent or anyone in their household



**68%**

Had telehealth appointments



**49%**

Ordered groceries, medication online



**42%**

Attended religious services



**85%**

Rated their health **Excellent/Very Good/Good**



**78%**

Had contact with family, friends or neighbors **Everyday/Several times a week**



**88%**

Travelled around their community by **driving themselves**

## Age-Friendly Survey Notes



- Allegheny County residents ages 45+
- January to March 2021
- Available online, in print and by phone
- 1,646 respondents
- Convenience sample
- Additional analysis to ensure sample is representative of County's demographics

Learn more at [swppa.org/agefriendly](http://swppa.org/agefriendly)

