

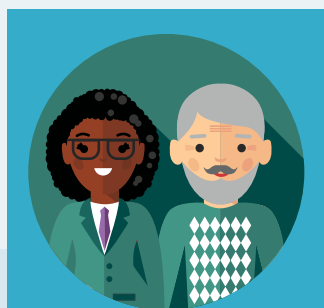
The Power of Our Older Workforce



The Pittsburgh region has more than
100,000
workers over age 65.

That number includes about
80,000 people participating in
the workforce, and more than
20,000 who report self-
employment income.

What do we know about our region's older workers?



In the
Pittsburgh region,
30% of women
and **40% of men**
age **65–69**
continue working.



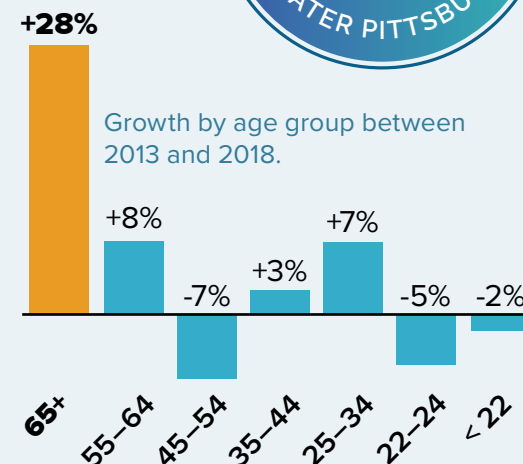
43%
have a
bachelor's degree



45%
work a
full-time schedule



They bring extensive
knowledge and
expertise, and
contribute **unique**
perspectives based
on experience.



**Older workers are the
fastest growing segment
of the region's workforce.**

The number of older workers in
southwestern Pennsylvania will
increase 50% by 2030, and then
remain relatively stable over the
following decade.

We face a worker shortage
ahead. Our older workforce is
part of the solution.

Information compiled from “Older Workers in the Southwestern Pennsylvania Workforce,” a 2019 report for Southwestern Pennsylvania Partnership for Aging (SWPPA) by the University of Pittsburgh’s Center for Social and Urban Research (UCSUR).